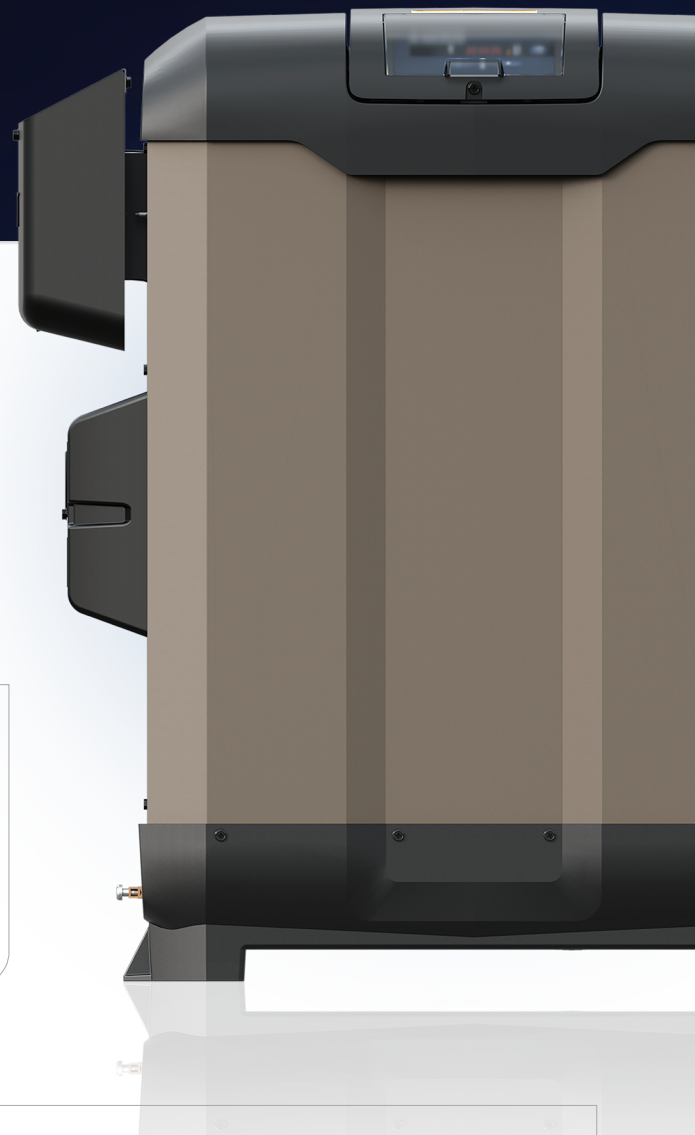


FITS BETTER.



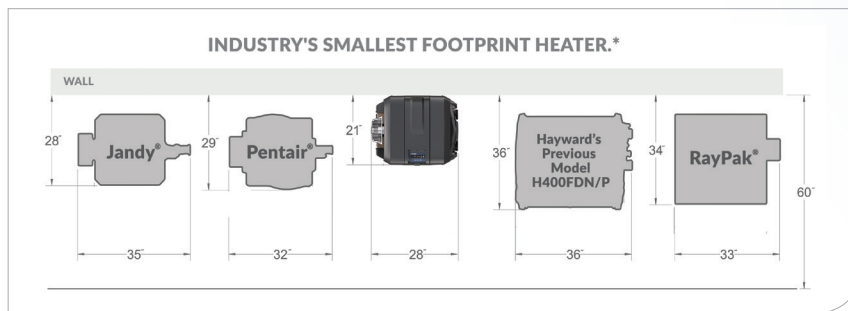
INDUSTRY'S SMALLEST FOOTPRINT HEATER.*

UNIVERSAL HC SERIES
HEATER



WHY SWITCH TO A HAYWARD HC SERIES HEATER?

- » **Smallest footprint on the market** (up to 40% smaller vs. competition) with zero wall clearance and no inlets or headers required
- » **Reversible top mount design** provides easy access for pool owners and servicers – no crouching needed
- » **Exclusive plumbing adapters** allow for drop-in replacement of Pentair and Jandy units without cutting pipes



HEATER REPLACEMENT OPTIONS - HAYWARD UNIVERSAL HC SERIES

BRAND	PUMP	SKU	HAYWARD REPLACEMENT		REPLACEMENT ADAPTER KIT
PENTAIR	MasterTemp	460736	UNIVERSAL HC SERIES	HDF400	UHXWPAK1930
		460737		HDF400	
		460805		HDF400	
	Max-E-Therm	SR400NA	UNIVERSAL HC SERIES	HDF400	UHXWPAK1930
		SR400LP		HDF400	
JANDY	JXi	SR400ND	UNIVERSAL HC SERIES	HDF400	UHXWJAK1930
		JXi400N		HDF400	
		JXi400P		HDF400	
		JXi400NK		HDF400	
		JXi400PK		HDF400	
		JXi400NN		HDF400	
		JXi400PN		HDF400	

*Among leading competitive brands.

MINIMUM FOOTPRINT, MAXIMUM PERFORMANCE

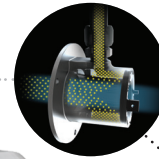
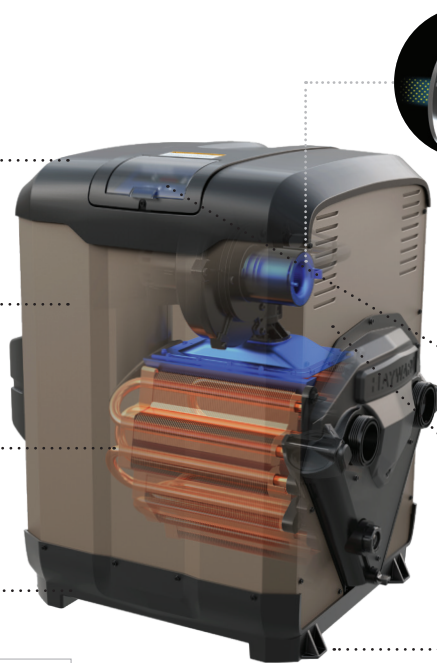
Hayward's Universal HC Series Dual-Fuel Gas Heater is the industry's smallest footprint heater, packing maximum performance into minimal space. Its small footprint plus its zero wall-clearance fits better in even the most compact pool pads. An exclusive adapter kit allows for easy drop-in replacement of Pentair and Jandy units without cutting pipes. The quick-access top is reversible for easily swapping plumbing from right to left and eliminates the kneel during service. And dual-fuel technology allows for in-field conversion from natural gas to propane.

Top-access design eliminates the need to remove side panels and kneel during service

Low NOx emissions meet clean air quality standards and offer premium heating performance

Cupro nickel heat exchanger comes standard, protecting against water corrosion and natural wear

Zero wall clearance ensures a seamless fit in smaller equipment pads and tight spaces



Easy-out mixing orifice allows for easy in-field conversion between natural gas and propane

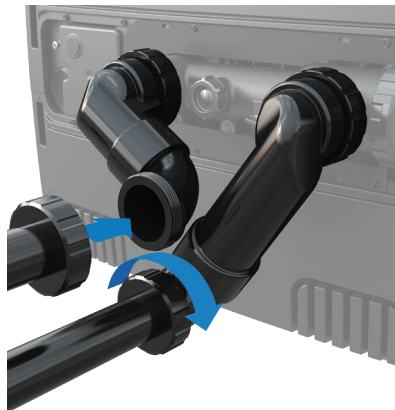
Quick-access reversible top easily swaps plumbing from right to left while providing access to gas shutoff, voltage selection and more, all via a single fastener

Compact, lightweight design makes installation easy in any environment

Integral tie-down connections on the base make for easy hand truck transport with no extra tie-down brackets required

TECHNICAL SPECIFICATIONS

Model Number	HDF400
Gas	Natural gas or propane
BTU/hr	400,000
Thermal Efficiency	84%
Heat Exchanger	Cupro nickel
Hot Surface Ignition	Silicon nitride
Combustion	Pre-mix
Low NOx Emissions	Yes
Digital Thermostat	Yes
Remote Compatible	2-wire and 3-wire
Supply Voltage	240/120 VAC
Water Connections	2"/2.5"
Gas Connection at Heater	3/4"
Installation Location	Outdoor or indoor
Footprint Dimensions (inches)	21" W x 21" D
Heater Dimensions (inches)	28" W x 21" D x 31" H
Heater Weight (lbs)	135
Shipping Dimensions (inches)	33" W x 33" D x 39" H
Shipping Weight (lbs)	170



Exclusive plumbing adapters allow for simple drop-in replacement with no pipe cutting required

REPLACEMENT ADAPTER KITS

- » Jandy JXi Heater:
UHXWJAK1930
- » Pentair MasterTemp & Max-E-Therm Heaters:
UHXWPAK1930



Patented butterfly bypass valve enables flow rates up to 125 GPM without extra accessories